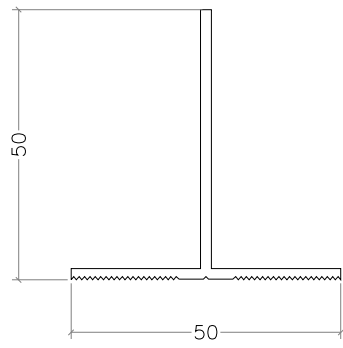




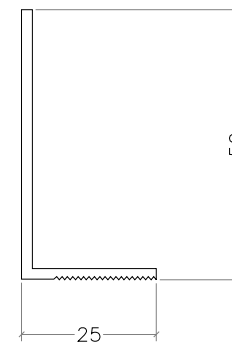
code	profile	profile features	code	profile	profile features
------	---------	------------------	------	---------	------------------



T Profile (50x50)

TP01

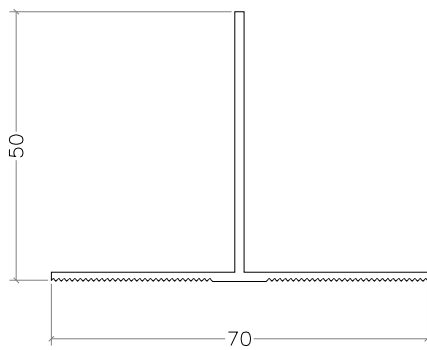
colour : ral



L Profile (25x50)

LP01

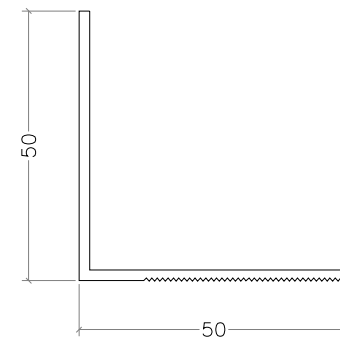
colour : ral



T Profile (70x50)

TP02

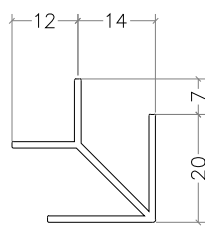
colour : ral



L Profile (50x50)

LP02

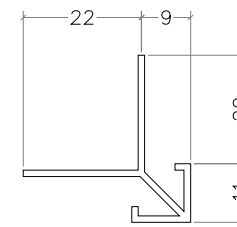
colour : ral



Corner Profile

K01

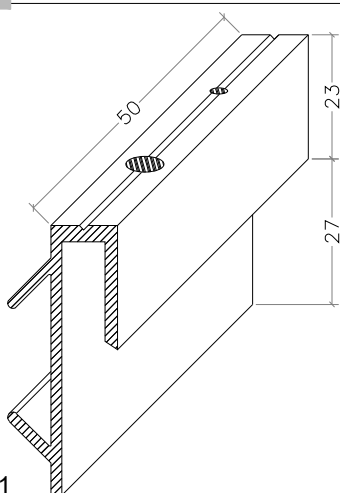
colour : ral



Corner Profile

K02

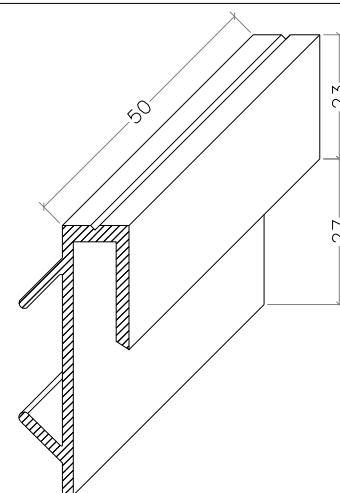
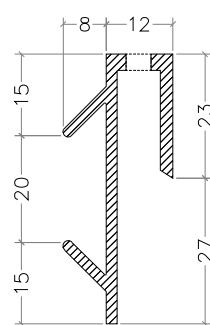
colour : ral



Top Clip

KL01

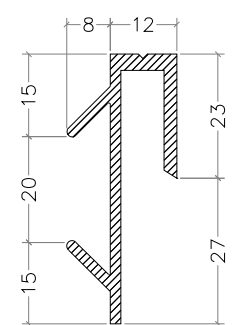
colour : ral



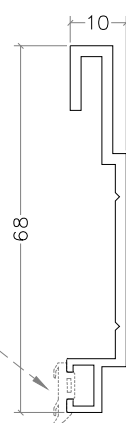
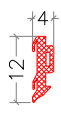
Bottom Clip

KL02

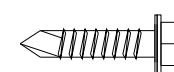
colour : ral



EPDM RUBBER PROFILE



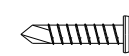
RAIL PROFILE



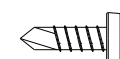
AKB 5,5x25 (M.U.V)



3,9x19 YHB (M.U.V)

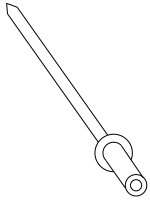
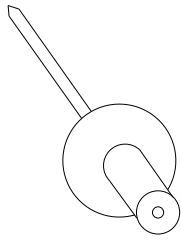
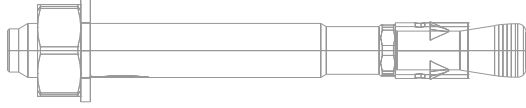
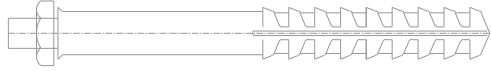




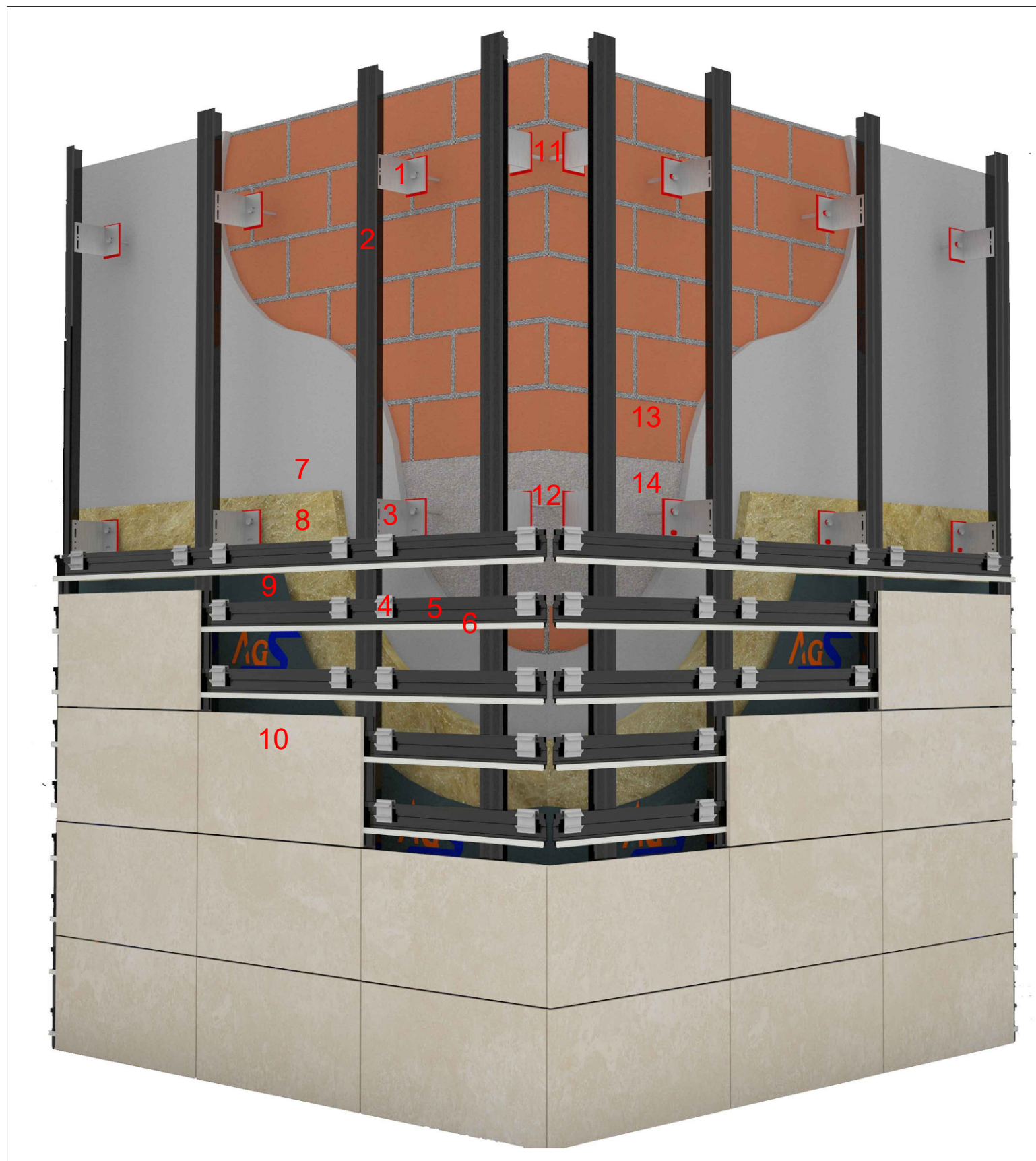
3,9x19 YSB (M.U.V)



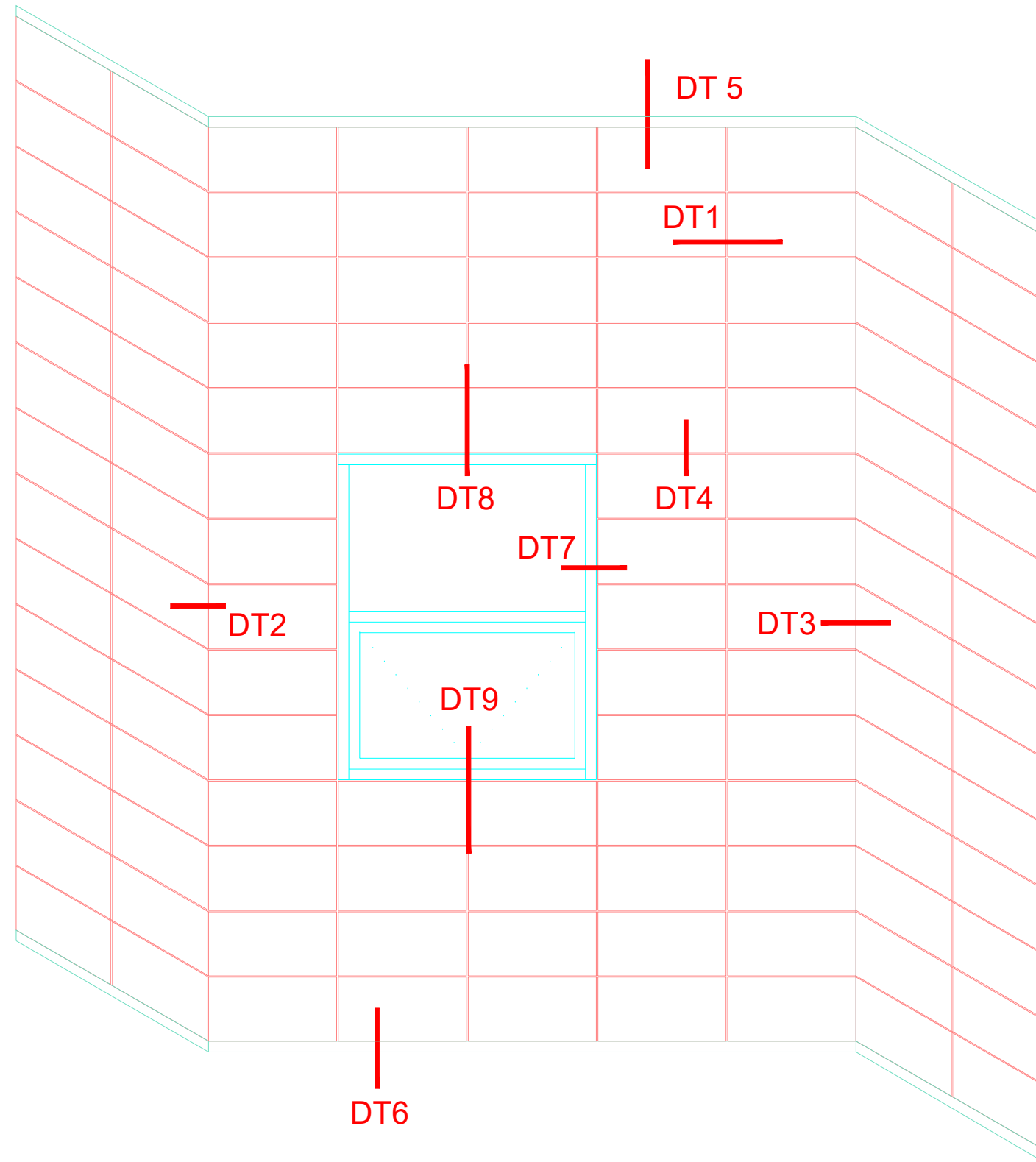
4,8x16 YSB (M.U.V)

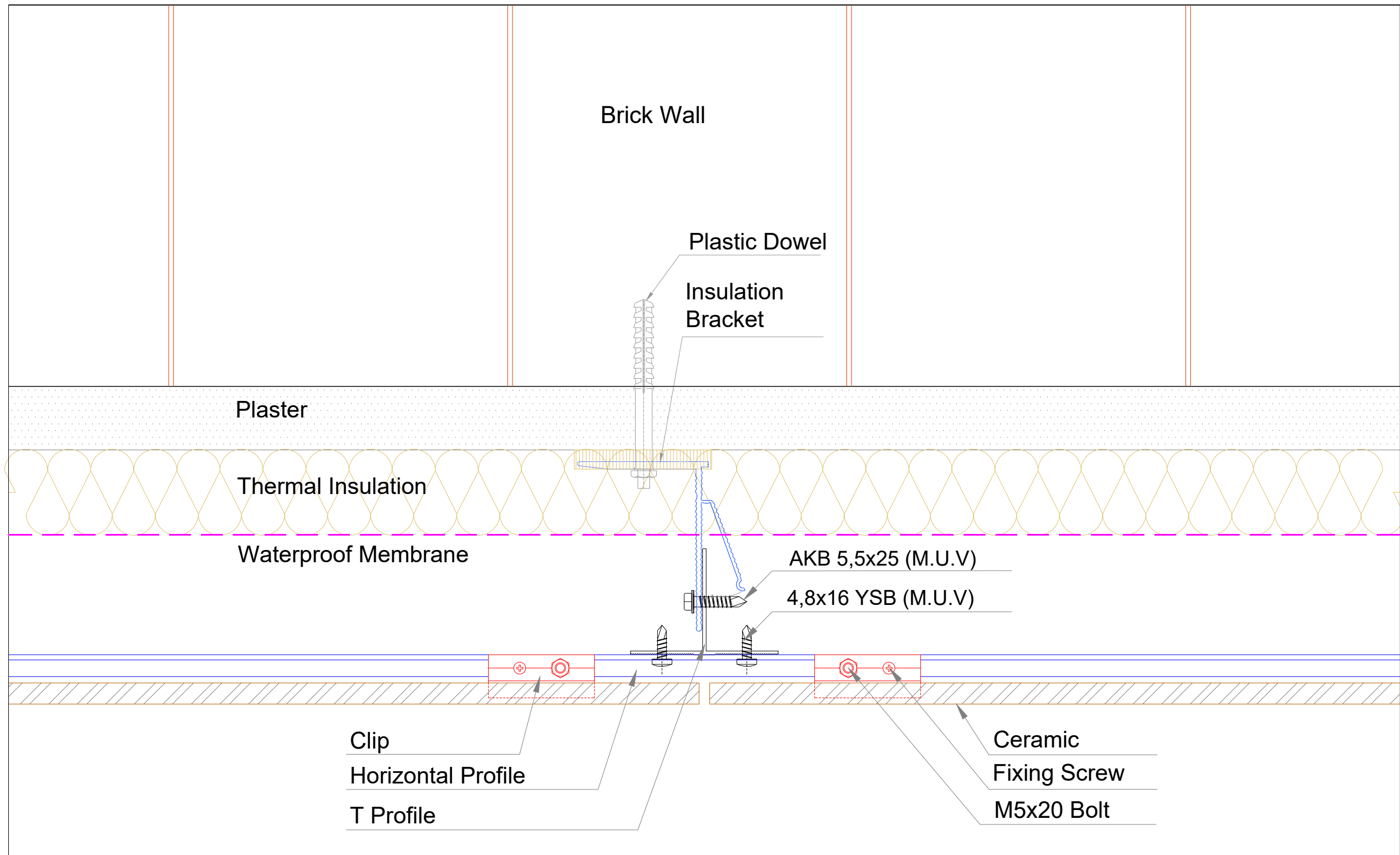


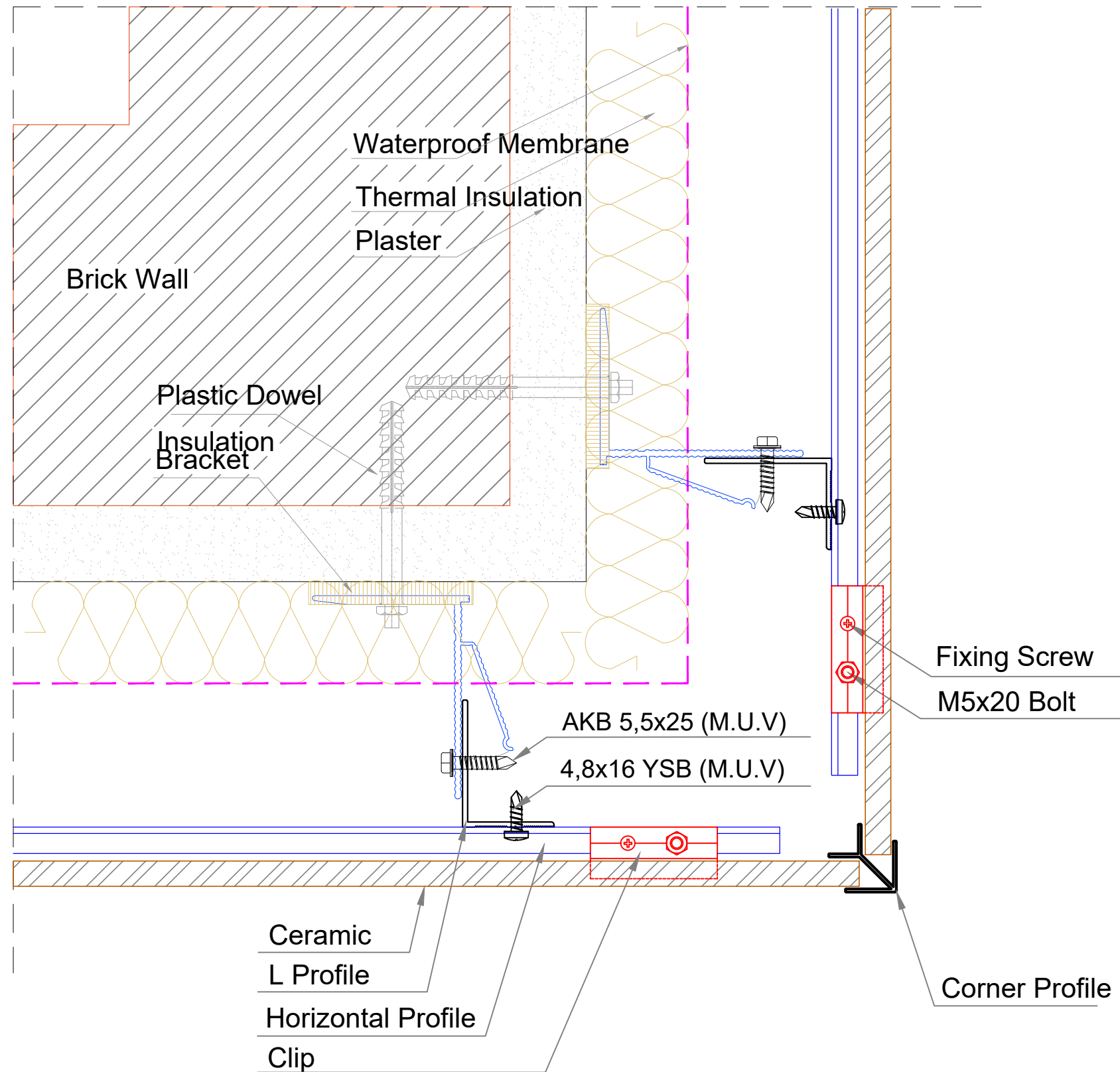
code	profile	profile features	code	profile	profile features
	 4x10 Rivet	 4,8x25 Rivet (Supply by requested ral code)		 Steel Dowel	
				 Plastic Dowel	
TP01	Instant Adhesive - Glue		LP01	Polyurethane Adhesive (600cc)	
					



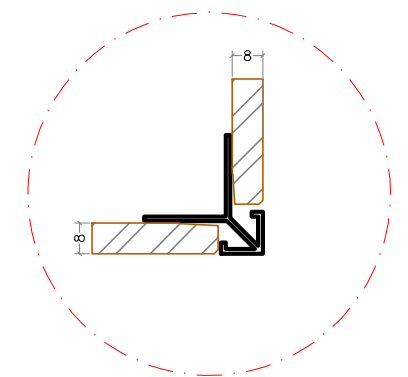
1. IZOFIX SUPPORT BRACKET
2. T PROFILE
3. IZOFIX MAIN BRACKET
4. CONCEALED FIXING ELEMENT
5. HORIZONTAL PROFILE
6. EPDM RUBBER PROFILE
7. PLASTER
8. THERMAL INSULATION
9. WATERPROOF MEMBRANE
10. CERAMIC
11. PLASTIC DOWEL
12. STEEL DOWEL
13. BRICK BLOCK
14. CONCRETE BEAM

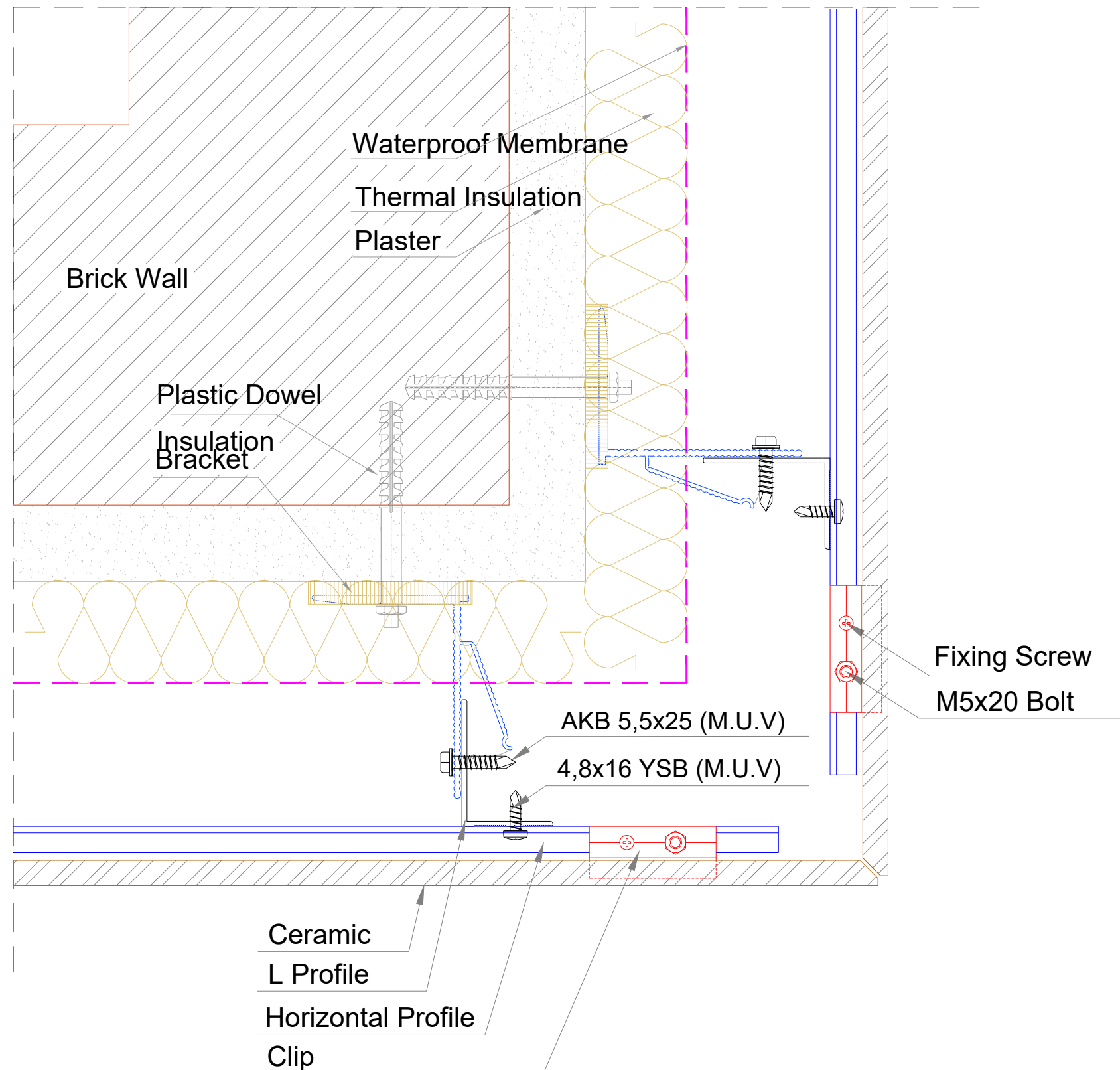


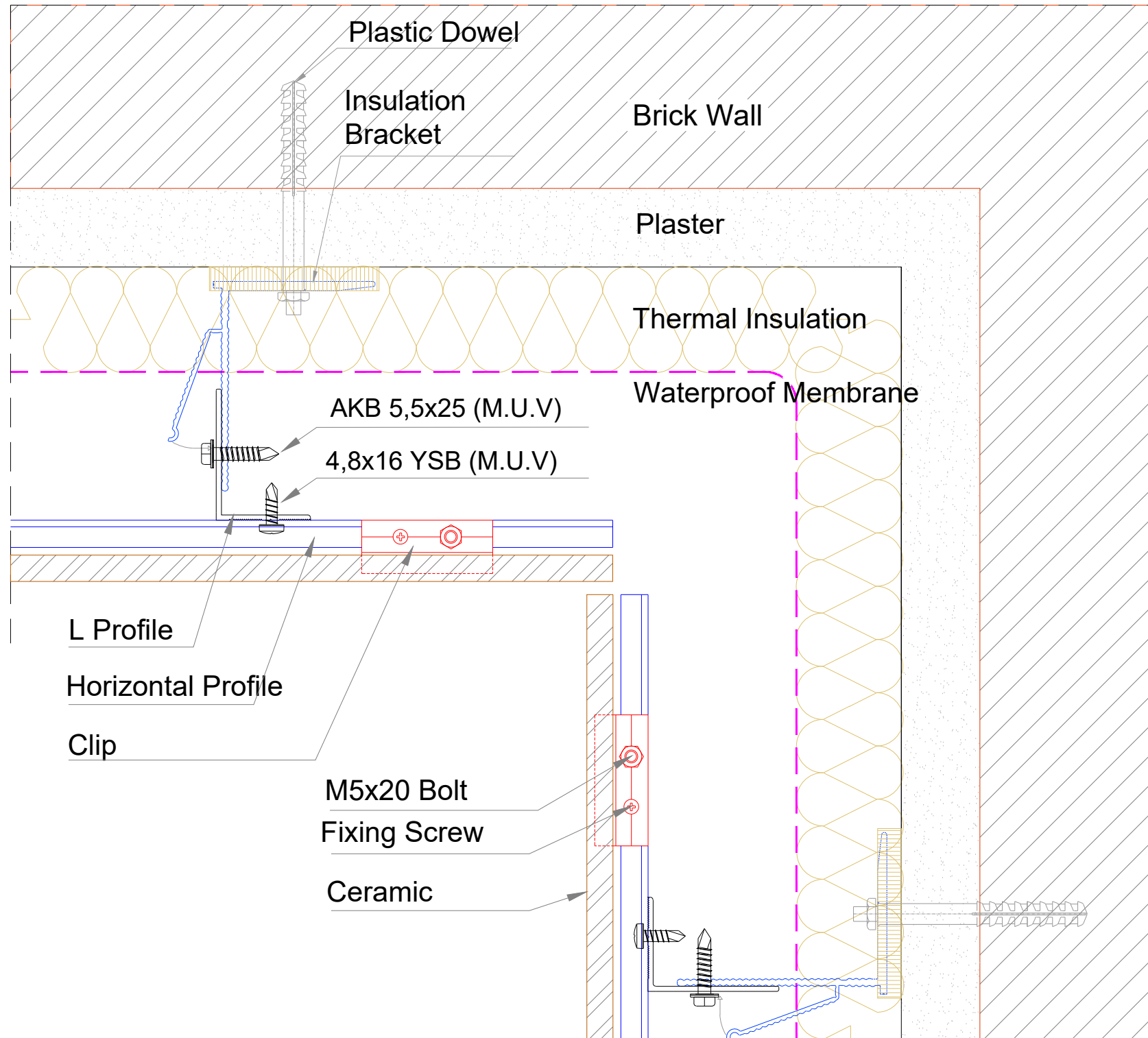


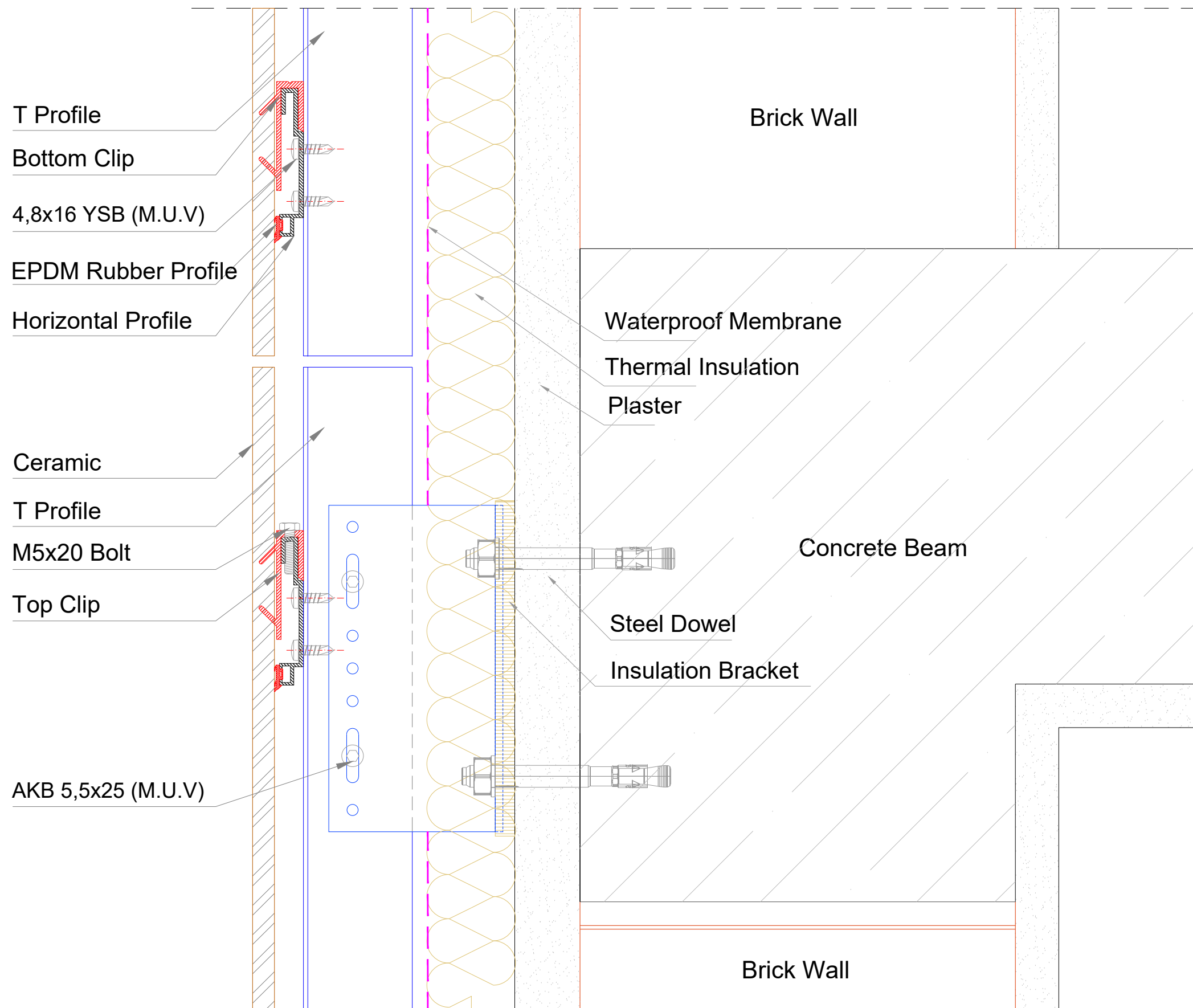


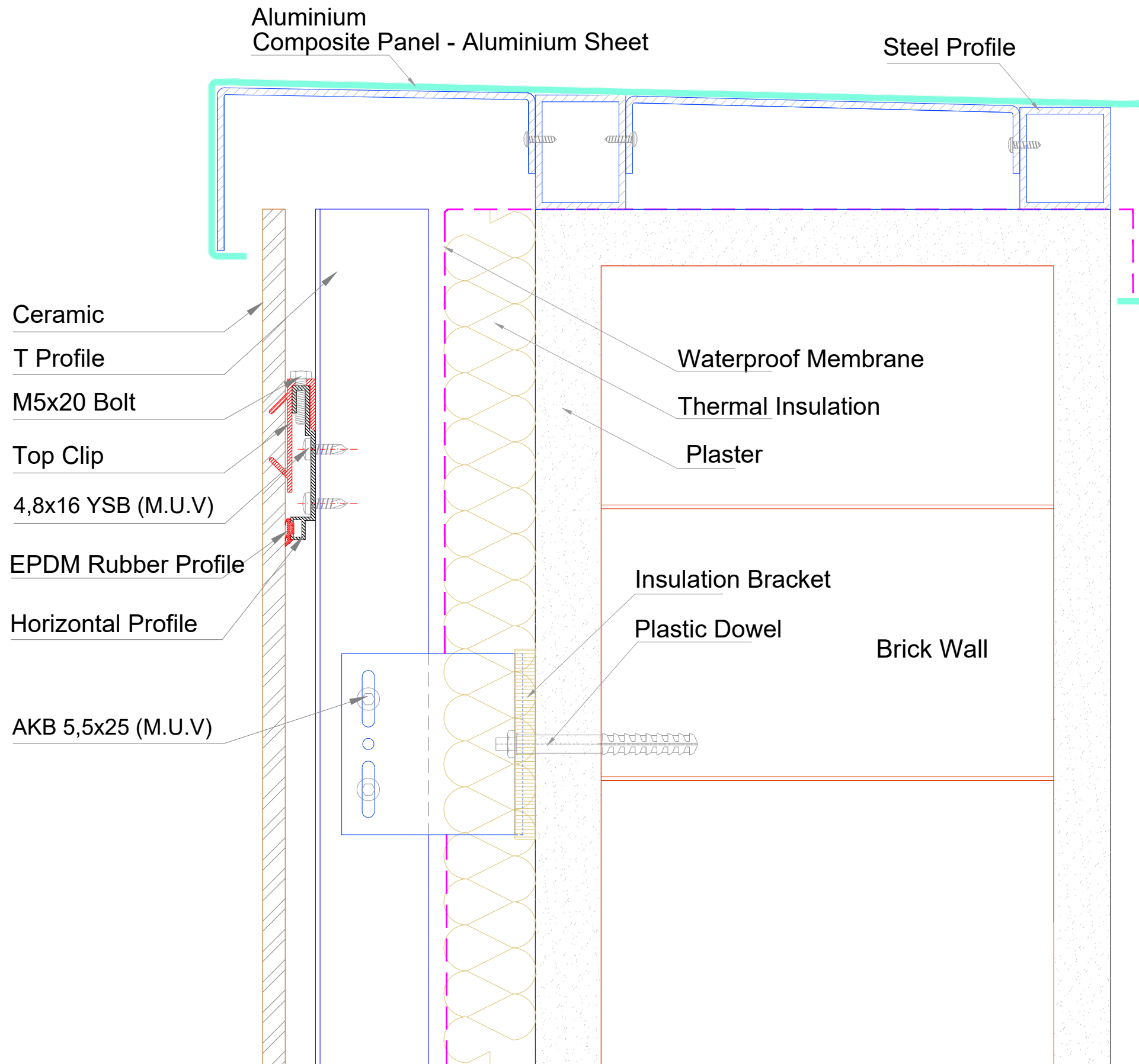
Alternative Corner Profile



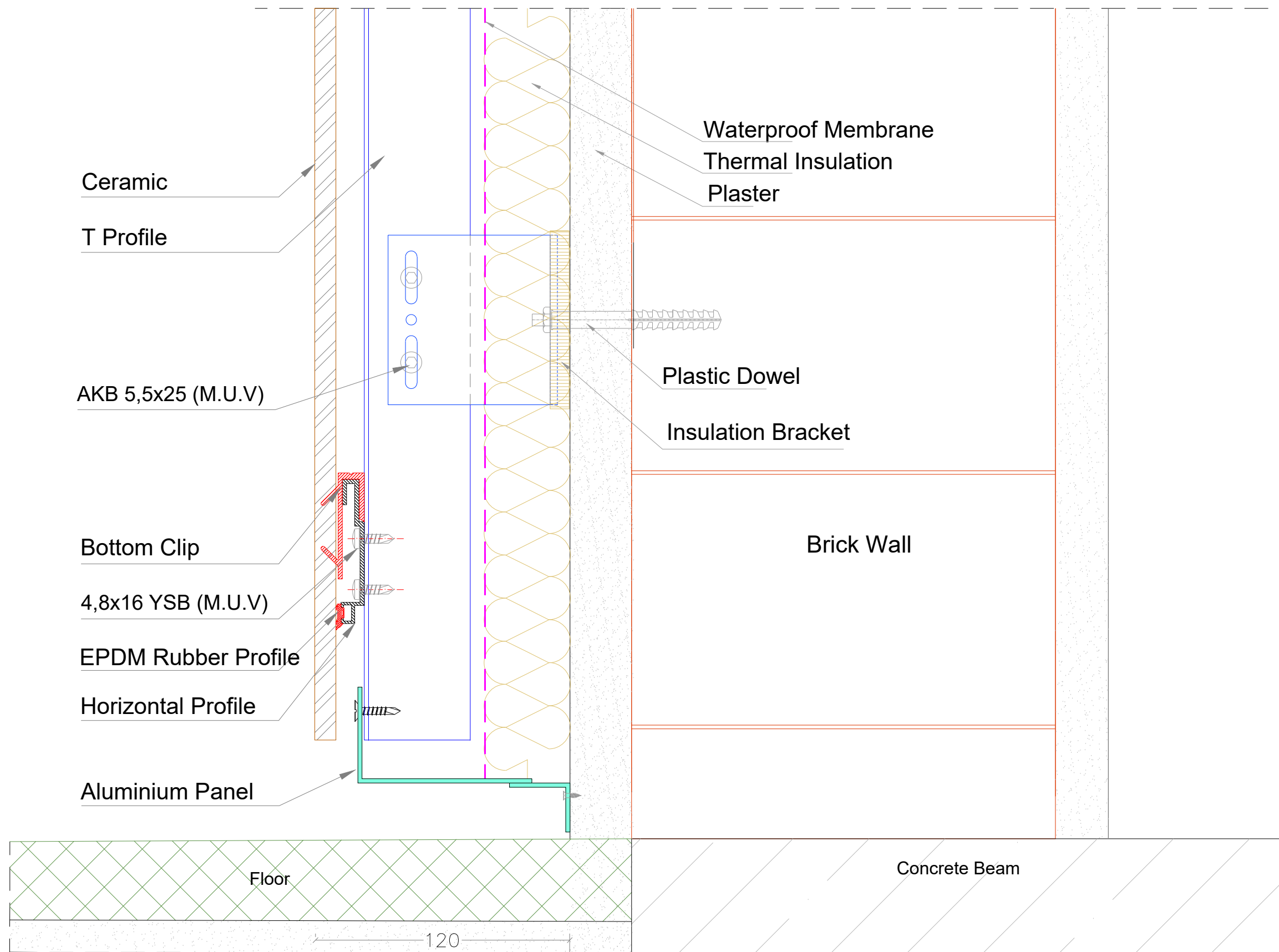


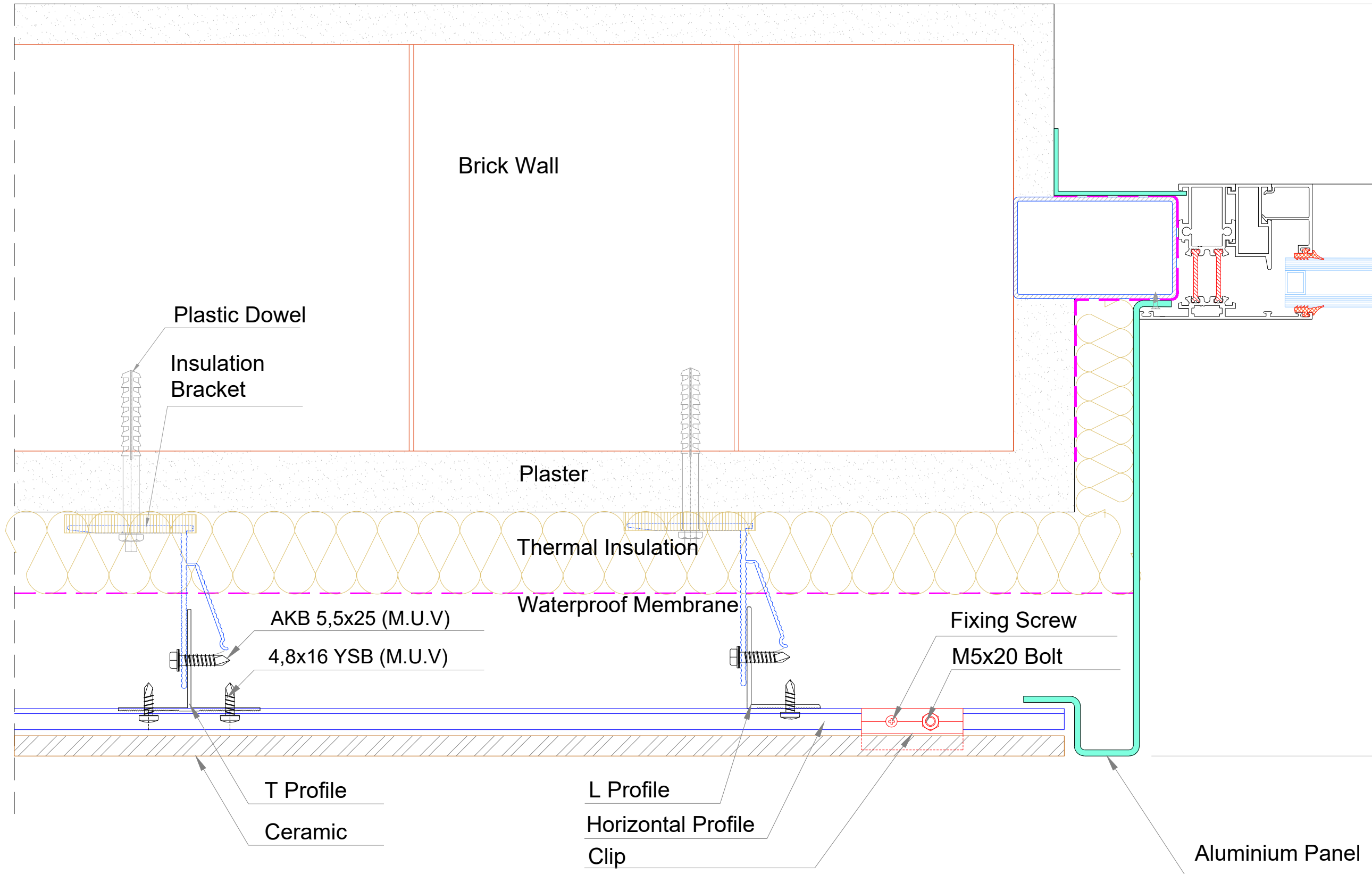


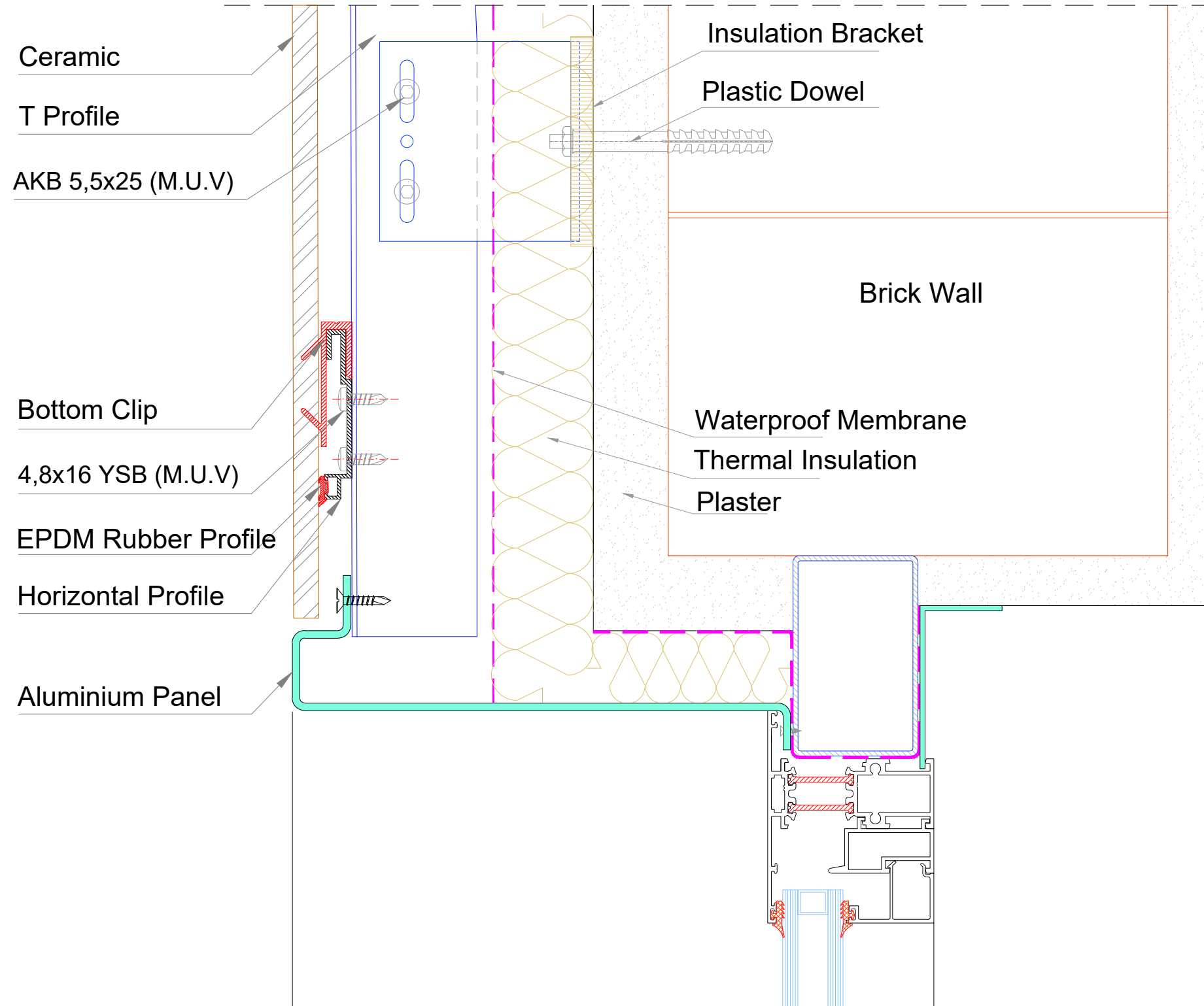


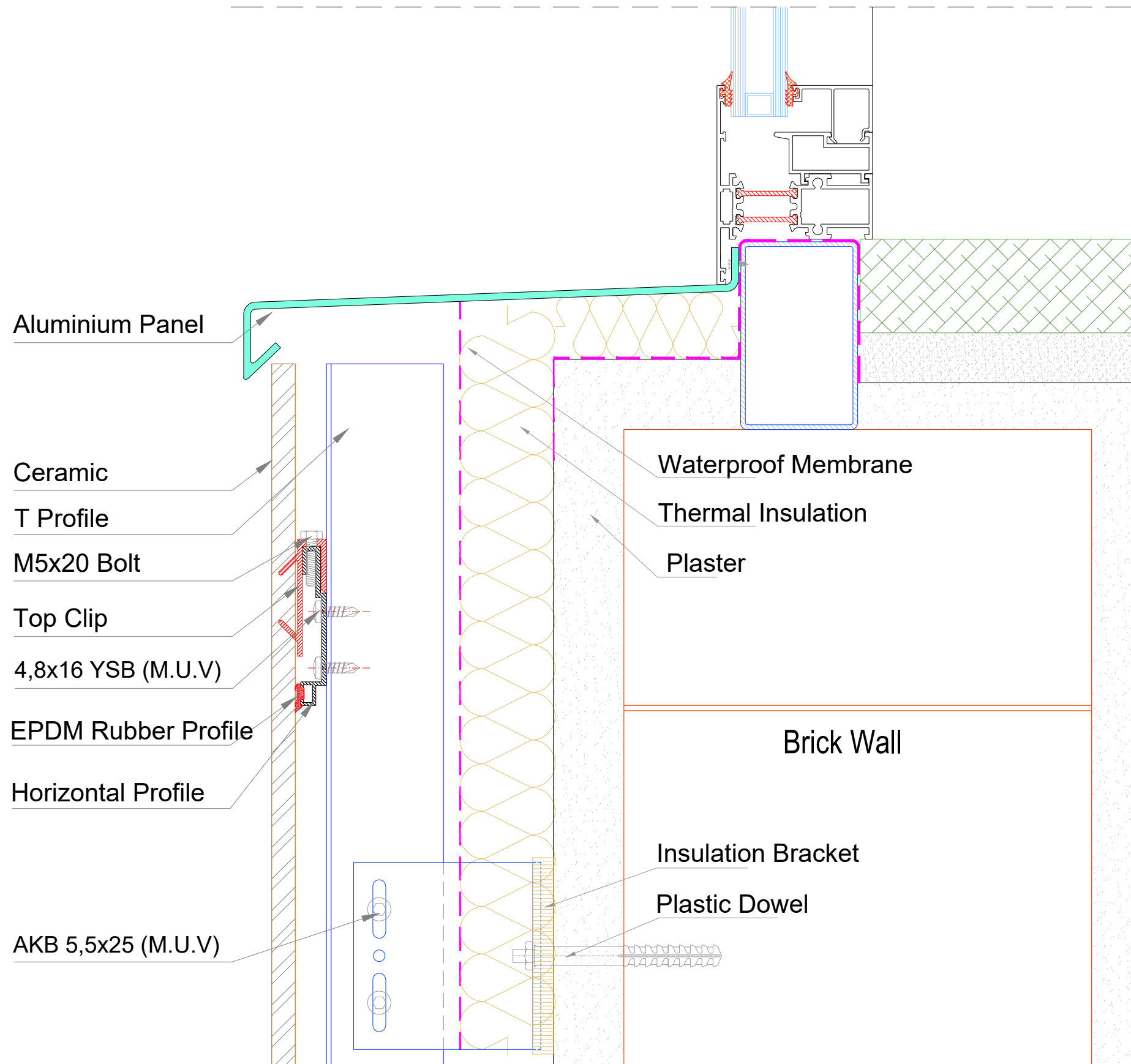


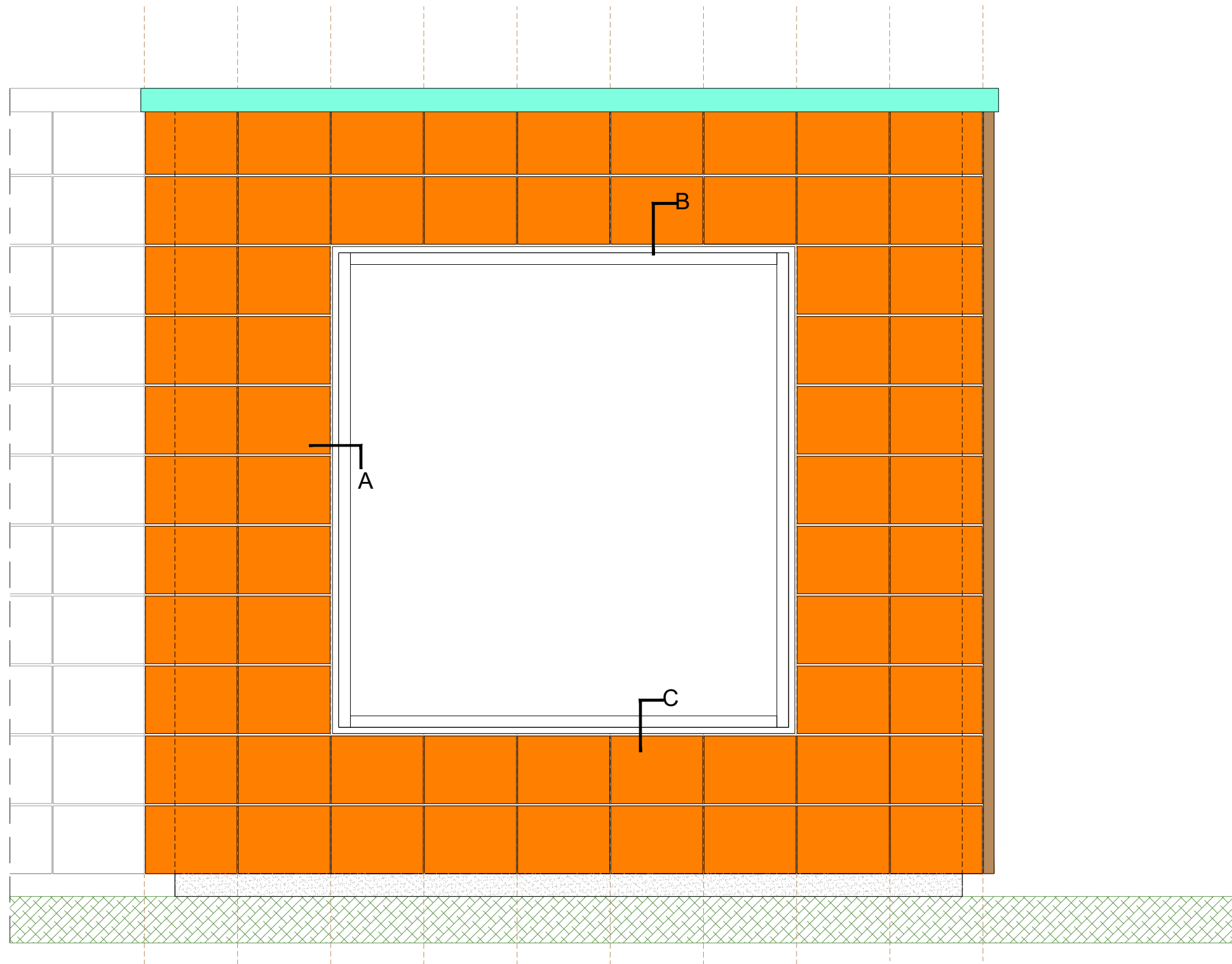
DETAIL 5

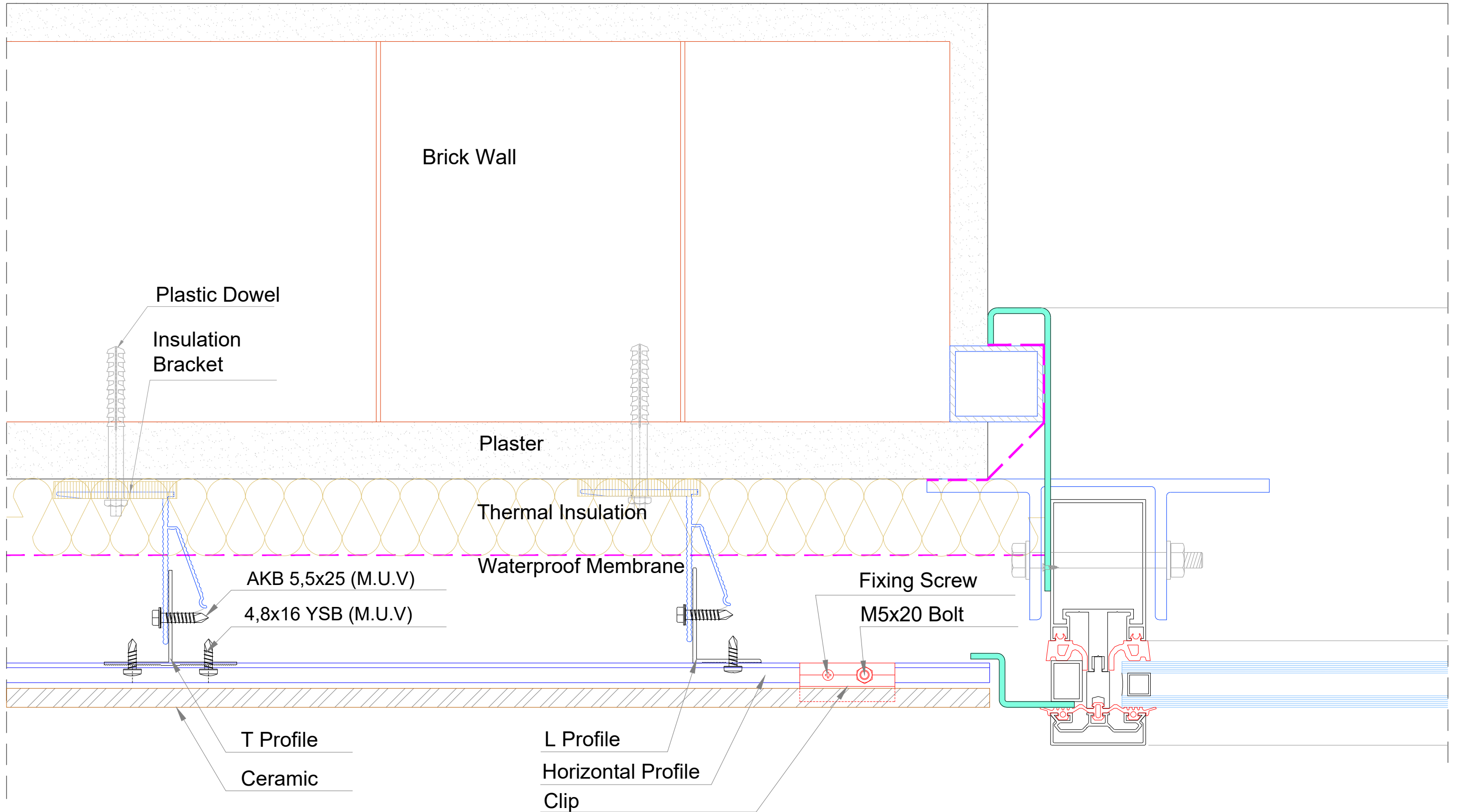




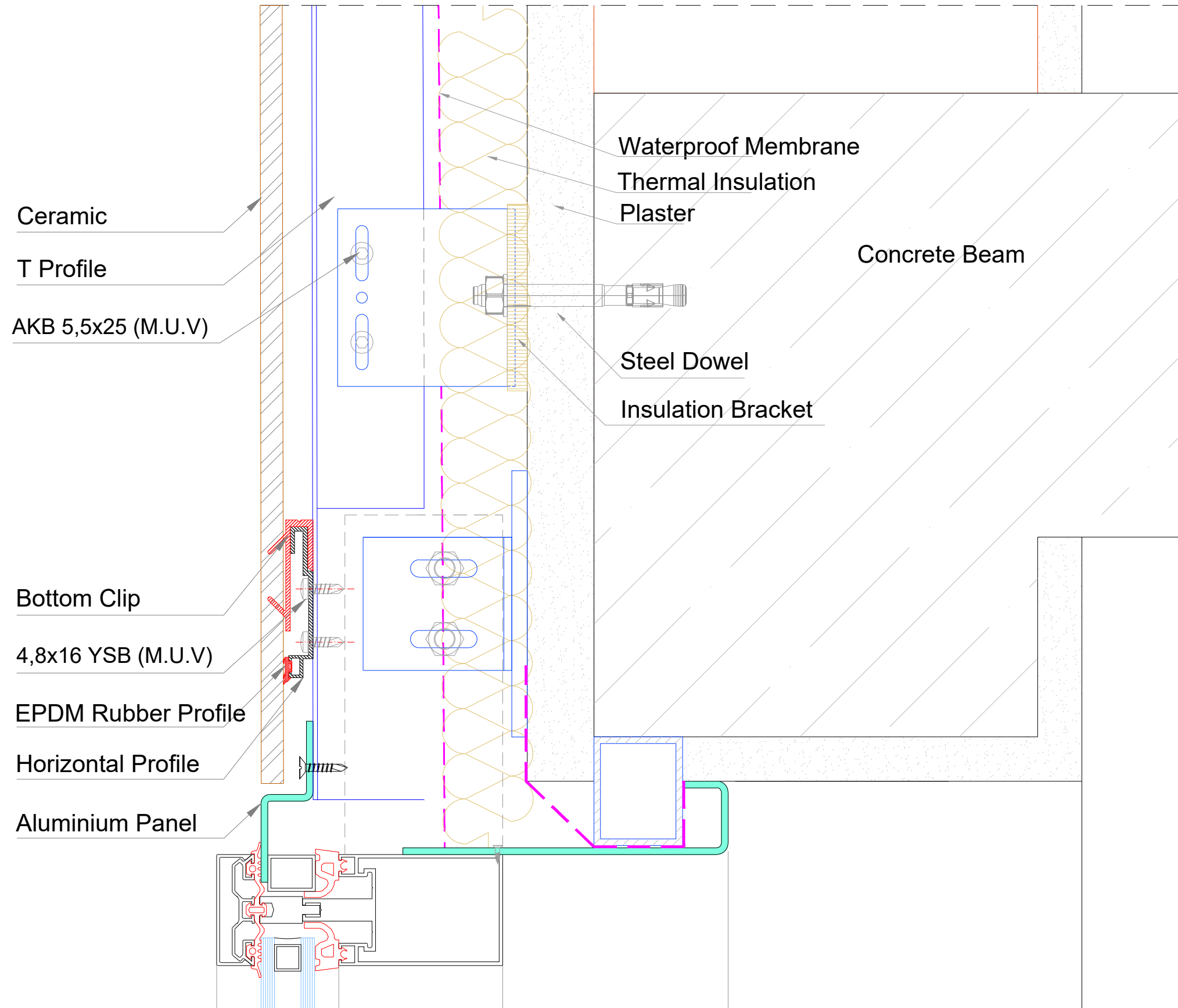




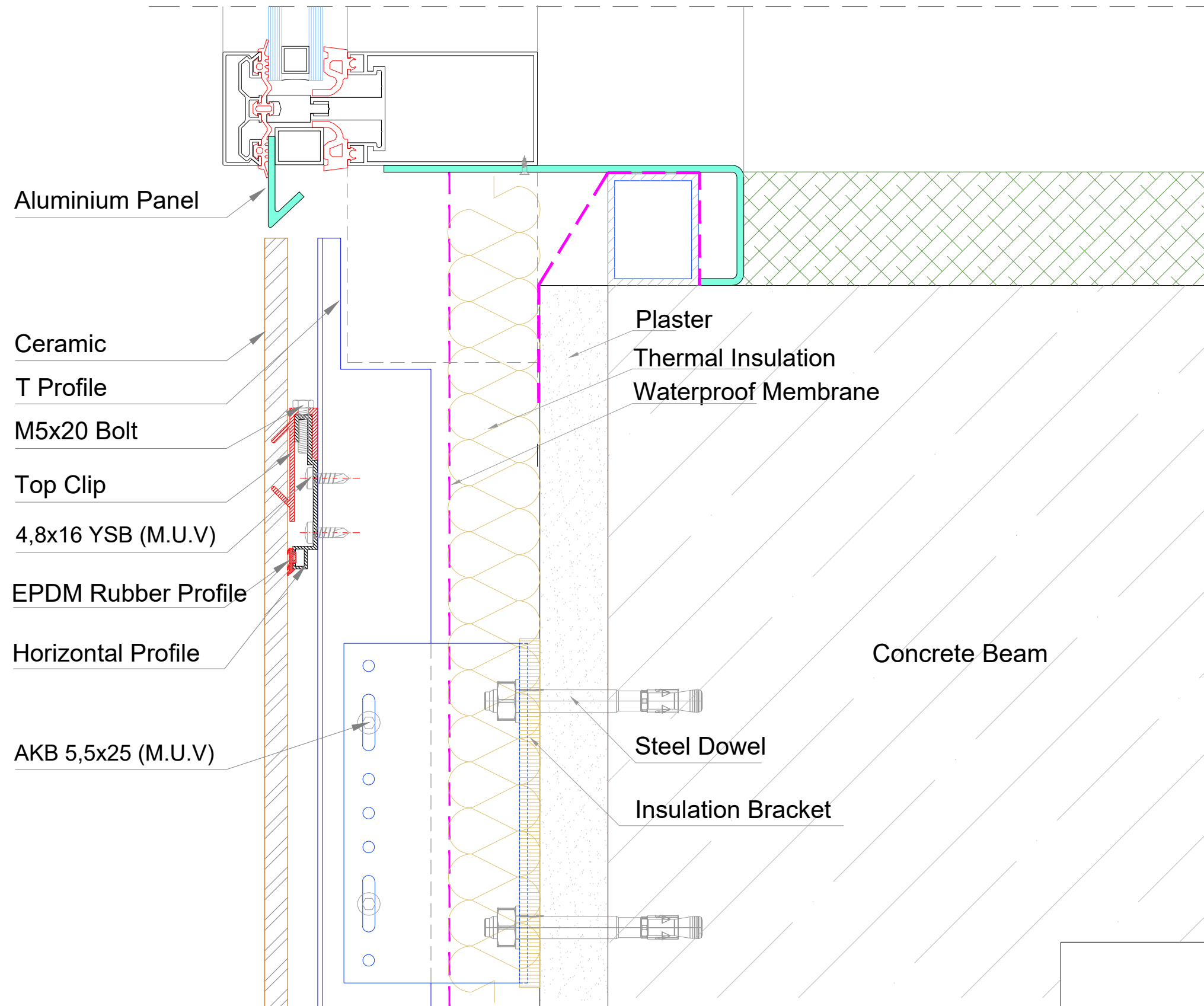




DETAIL A



DETAIL B



DETAIL C